

2024 Hot Mix Asphalt Shoulder Milling and Paving

US-10, Lake and Osceola Counties

Bid Proposal

This work is being bid out by Lake County Road Commission on behalf of the Michigan Department of Transportation for the HMA skip cold milling and shoulder paving of six widenings in three locations, along US-10 in Lake and Osceola Counties.

- Two widenings between Shepherd Rd and Timber Creek Drive, Lake County
- Two widenings just west of 175th Ave, Osceola County
- Two widenings between 60th Ave and 80th Ave, Osceola County

This work is contingent upon securing funding. No work should begin without a final approval from Kyle Knoop, Michigan Department of Transportation's Maintenance Coordinator.

The contractor shall not begin this work until after June 10, 2024, and will begin this work no later than August 12, 2024. The contractor will have three continuous weeks to complete this work once work begins.

Work shall take place only Monday through Thursday during daylight hours.

Description of Work:

In Lake County:

- Cold milling 8' of the existing shoulder (3' paved, 5' gravel) to a depth of 2 inches as staked in two locations between Shepherd Rd and Timber Creek Drive then placement of LVSP, 13A or an approved alternative hot mix asphalt at a rate of 220#/syd including tacking all milled surfaces and double tacking vertical edges.
 - The eastbound paving length is 610' long and the westbound paving length is 715' long.

In Osceola County:

- Cold milling 8' of the existing shoulder (3' paved, 5' gravel) to a depth of 2 inches as staked on eastbound and westbound US-10 west of 175th Ave then placement of LVSP, 13A or an approved alternative hot mix asphalt at a rate of 220#/syd including tacking all milled surfaces and double tacking vertical edges.
 - Both eastbound and westbound paving lengths are 1100' long.
- Placing 5' width of LVSP, 13A or an approved alternative hot mix asphalt at a rate of 220#/syd including tacking double tacking vertical edges on a shoulder aggregate surface to be graded by others.
 - There is 1700' of paving on westbound US-10 between 60th and 65th Ave and 1800' of paving on eastbound US-10 between 70th and 80th Ave.

- Please provide three working days (Monday through Thursday) notice to allow for others to grade prior to paving.

Milling and paving limits have been staked by others.

Provide single lane closures maintained with traffic regulators in accordance with the attached detail with a maximum closure length of two miles.

Work shall be performed in accordance with MDOTs 2012 Standard Specifications for Construction.

Coordination Clause:

The Contractor is advised that other projects in the vicinity may be under construction during the life of this contract. The Contractor is reminded of the requirements in Section 104.08 of the 2012 Standard Specifications for Construction to cooperate with other contractors, utility companies and public agencies.

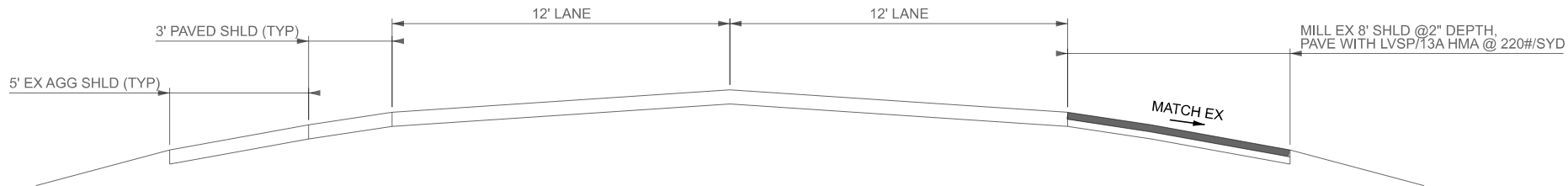
Insurance:

Insurance Requirements are as per MDOT 2012 Standard Specifications for Construction.

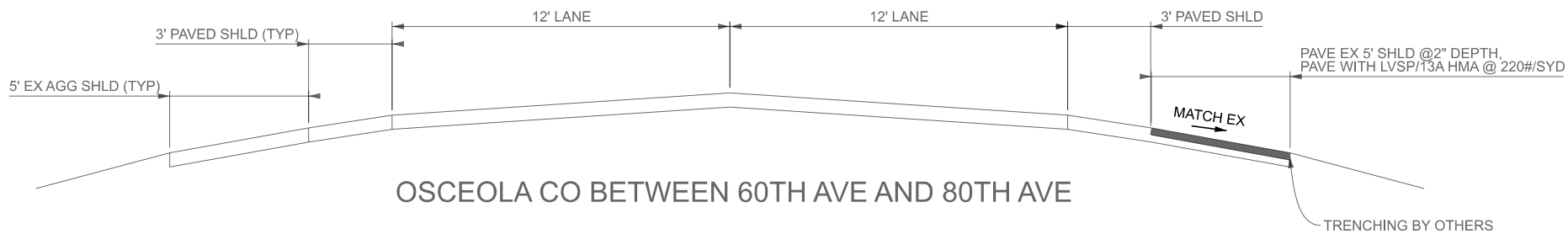
Estimated Quantities:

All work necessary to complete this project shall be paid as a single LUMP SUM. Estimated quantities are as follows:

Cold Milling HMA Surface	3133 Syd at = \$_____.	_____ Syd = \$_____.
HMA, LVSP	560 tons at = \$_____.	_____ ton = \$_____.
Traffic Control	1 LS = \$_____.	= \$_____.
Mobilization	1 LS = \$_____.	= \$_____.
BID TOTAL		= \$_____.



LAKE COUNTY LOCATIONS
OSCEOLA CO WEST OF 175TH AVE (BOTH EB & WB)



OSCEOLA CO BETWEEN 60TH AVE AND 80TH AVE

	NO SCALE	DATE:	CS:		DRAWING	SHEET
		DESIGN UNIT:	JN:			SECT
		TSC:				
FILE:						

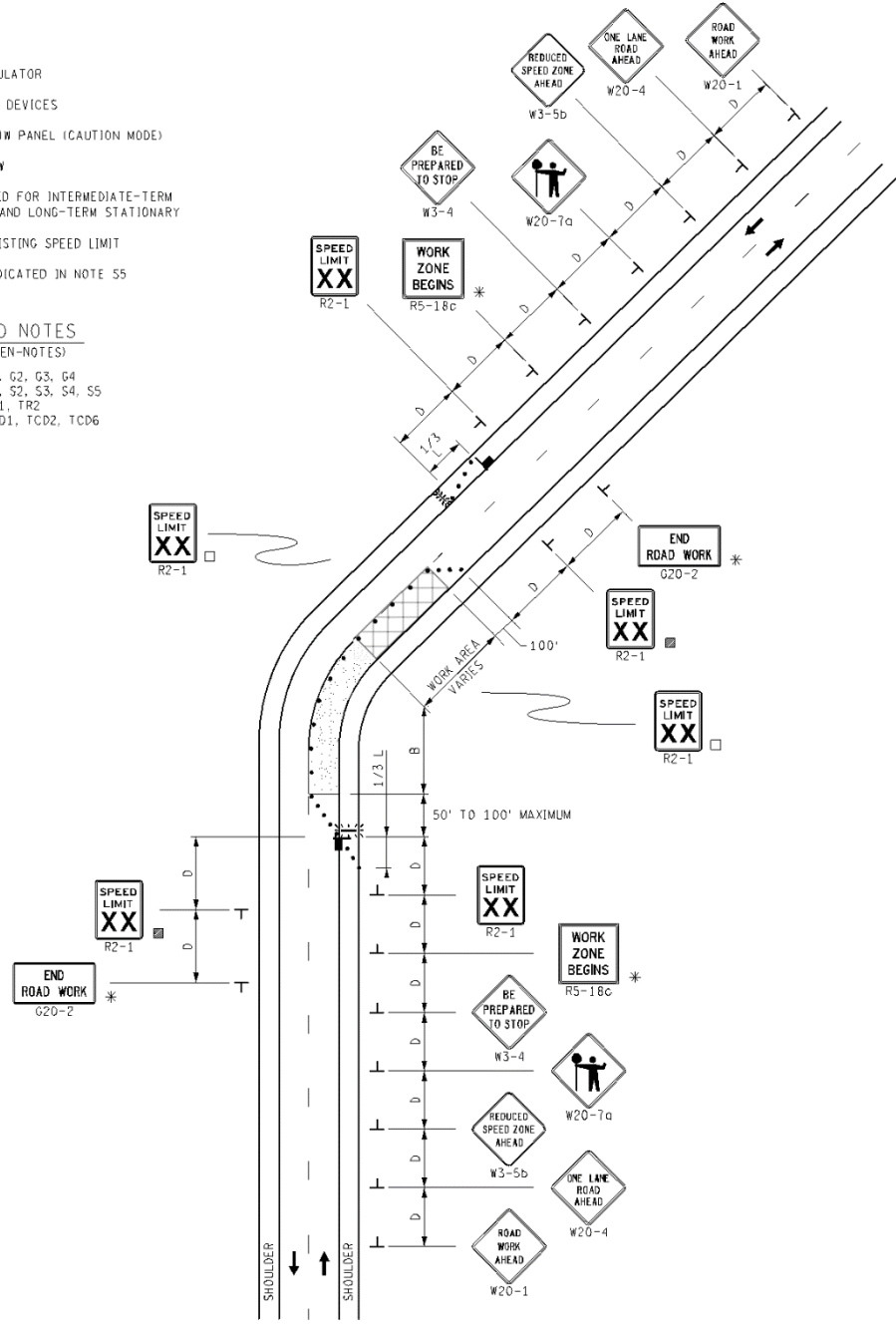
KEY

- TRAFFIC REGULATOR
- CHANNELIZING DEVICES
- ⚡ LIGHTED ARROW PANEL (CAUTION MODE)
- ← TRAFFIC FLOW
- * ONLY REQUIRED FOR INTERMEDIATE-TERM STATIONARY AND LONG-TERM STATIONARY
- ▣ REFLECTS EXISTING SPEED LIMIT
- PLACE AS INDICATED IN NOTE 55

STANDARD NOTES

(SEE 102-GEN-NOTES)

GENERAL: G1, G2, G3, G4
 SIGNING: S1, S2, S3, S4, S5
 TRAF REG: TR1, TR2
 DEVICES: TCD1, TCD2, TCD6



NOT TO SCALE



MAINTENANCE
TRAFFIC CONTROL
TYPICAL

DURATION:
LONG-TERM STATIONARY
INTERMEDIATE-TERM STATIONARY
SHORT-TERM STATIONARY

**LANE CLOSURE
FOR A TWO-LANE, TWO-WAY ROADWAY
UTILIZING TRAFFIC REGULATORS
WITH A MAXIMUM 10 MPH SPEED REDUCTION**

DATE: NOV 2020
 NO: 4110B-M-TR-NFW-2L
 SHEET: 1 OF 1

FILE: 4110B-M-TR-NFW-2L.dgn

DISTANCE BETWEEN TRAFFIC SIGNS, "D"

"D" DISTANCES	POSTED SPEED LIMIT, MPH (PRIOR TO WORK AREA)										
	25	30	35	40	45	50	55	60	65	70	75
D (FEET)	250	300	350	400	450	500	550	600	650	700	750

GUIDELINES FOR LENGTH OF LONGITUDINAL BUFFER SPACE, "B"

"B" LENGTHS	SPEED,* MPH (PRIOR TO WORK AREA)											
	20	25	30	35	40	45	50	55	60	65	70	75
B (FEET)	33	50	83	132	181	230	279	329	411	476	542	625

* POSTED SPEED, OFF-PEAK 85TH PERCENTILE SPEED PRIOR TO WORK STARTING, OR THE ANTICIPATED OPERATING SPEED.

MINIMUM MERGING TAPER LENGTH, "L" (FEET)

OFFSET (FEET)	POSTED SPEED LIMIT, MPH (PRIOR TO WORK AREA)										
	25	30	35	40	45	50	55	60	65	70	75
1	11	15	21	27	45	50	55	60	65	70	75
2	21	30	41	54	90	100	110	120	130	140	150
3	32	45	62	80	135	150	165	180	195	210	225
4	42	60	82	107	180	200	220	240	260	280	300
5	53	75	103	134	225	250	275	300	325	350	375
6	63	90	123	160	270	300	330	360	390	420	450
7	73	105	143	187	315	350	385	420	455	490	525
8	84	120	164	214	360	400	440	480	520	560	600
9	94	135	184	240	405	450	495	540	585	630	675
10	105	150	205	267	450	500	550	600	650	700	750
11	115	165	225	294	495	550	605	660	715	770	825
12	125	180	245	320	540	600	660	720	780	840	900
13	136	195	266	347	585	650	715	780	845	910	975
14	146	210	286	374	630	700	770	840	910	980	1050
15	157	225	307	400	675	750	825	900	975	1050	1125

NOT TO SCALE

 Michigan Department of Transportation	NOT TO SCALE	WORK ZONE TRAFFIC CONTROL TYPICAL	"B", "D" AND "L" TABLES CHANNELIZING DEVICE SPACING, SIGN BORDER KEY, AND ROLL-AHEAD SPACING	DATE: NOV 2020
		NO: 101-GEN-SPACING-CHARTS		SHEET: 1 OF 3

FILE: 101-GEN-SPACING-CHARTS.dgn